

UPDATED DEC/13/2021



Maximum 8 Students per Class

# 2022 Course Prices & Information

San Diego Adult Programs | Junior Programs

Since 1972



## 2022 San Diego Courses *(For ages 17+)*

English Programs	Lessons per Wk	Lesson Times	Price per week (starts any Monday)					
			2	3	4-7	8-12	13-24	25 +
General English								
Standard	20	am	\$360	\$350	\$345	\$340	\$320	\$315
Standard Plus (FI)	21.8	am/pm	\$360	\$350	\$345	\$340	\$320	\$315
Intensive (FI)	28	am/pm	\$445	\$435	\$430	\$425	\$405	\$400
Afternoon Elective	8	pm	\$175	\$175	\$175	\$175	\$175	\$175
Premier English (max 4 students per class)*								
Executive English	20	am	\$755	\$750	\$745	\$735	\$735	\$735
Executive Intensive (FI) <sup>†</sup>	28	am/pm	\$855	\$850	\$845	\$835	\$835	\$835
English for Engineers	20	am	\$755	\$750	\$745	\$735	\$735	\$735
Aviation English	20	am	\$755	\$750	\$745	\$735	\$735	\$735
Global Success	20	am	\$755	\$750	\$745	\$735	\$735	\$735

\* A minimum of 2 students is required to open a class. There is a \$200 per week supplement for a one to one class.

† "Executive Intensive 28 lessons" is a combination of 20 lessons of Executive English (premier class), plus 8 hours of an afternoon elective (general class).

Test Preparation	Lessons per Wk	Lesson Times	Price per Session (start dates vary)				
			4 wks	6 wks	7 wks	9 wks	11 wks
B1 PET	20	am	x	\$2,390	x	x	x
B2 FCE	20	am	x	x	x	\$3,860	\$4,595
B2 FCE Intensive (FI)	28	am/pm	x	x	x	\$4,155	\$5,080
C1 CAE	20	am	x	x	\$3,388	\$3,860	\$4,595
C1 CAE Intensive (FI)	28	am/pm	x	x	\$3,542	\$4,155	\$5,080
TOEFL	20	am	\$1,420	\$2,125	x	x	x
TOEIC	20	am	x	\$2,125	x	x	x
IELTS	20	am	x	\$2,280	x	x	\$4,185

\*\* Placement between December 15 and January 15 is limited

\*\*\* AYP and Pathway prices based on Intensive English. Other courses may be substituted. Additional weeks of study may be added at an additional cost.

Private Lessons	Time	1 lesson	5 lessons	10 lessons	15 lessons	20 lessons
Standard Private (50 minutes per lesson)	To be arranged	\$90	\$395	\$750	\$1,085	\$1,445
Executive Private (50 minutes per lesson)		\$95	\$435	\$860	\$1,165	\$1,500

Family Program	Cost
	Contact school for additional details as cost is dependent on family size

Other Programs	Placement Fee	Course***	Total CISL Cost***
Career English Package**	\$1,360	\$2,070+	\$3,430+
Academic Year Program (AYP)	\$1,360	\$6,480+	\$7,840+
University Pathway	\$1,360	\$5,100+	\$6,460+

### Lesson times

#### am = Morning Classes:

Monday - Friday 9:00 am - 12:40 pm

#### pm = Afternoon Classes:

Monday - Thursday 1:30 pm - 3:10 pm

#### Plus Class:

Monday - Friday 9:00 am - 12:40 pm

&

Wednesday 1:30 pm - 3:00 pm

### Other Charges

Application Fee (Non-refundable)..... \$150  
 Books/materials..... \$0  
 Credit Card fees..... 3%-4%  
 Airport transfer (one way)..... \$80

Express mail.....\$80  
 CAE/FCE Exam Fee.....\$350  
 PET Exam Fee.....\$200

## COURSE DESCRIPTION

**Standard English:** A combination of speaking, listening, reading and writing

**Standard Plus (FI only):** Standard class plus self-study Study Hall class

**Intensive English:** Standard English plus a choice of afternoon elective

**Afternoon Elective-Conversation:** Focus on fluency in speaking and pronunciation

**Afternoon Elective-Business:** Focus on general business topics

**Afternoon Elective-English for Academic Purposes (EAP):** Focus on academic writing (university-bound students)

**Executive English:** Accelerated course focusing on developing skills needed in an English business environment.

**Executive Intensive:** Executive English (premier class) plus choice of afternoon elective (general class)

**English for Engineers:** Focus on professional engineering communications in all fields

**Aviation English:** Focus on achieving ICAO operational level 4 or higher

**Global Success:** The English Training for Global Success program is designed for career preparation and professional development.

**Career English:** 6+ weeks of English classes followed by 6 - 8 weeks placement with a local business

**Academic Year Program (AYP):** CISL Intensive English course followed by one semester at Grossmont College. Begins May or August. AYP students receive assistance with admission and advising process

**University Pathway:** 12+ weeks Intensive English plus EAP and assistance with University admission process

**Standard Private Lessons:** Focus on areas of interest to the student with a certified English teacher

**Family Program:** Focus on practicing English in a fun, safe environment in customized private or semi-private lessons for children.

**Executive Private Lessons:** Focus on areas of interest to the student with a certified Executive English teacher

**B1 Preliminary PET:** Preparation for success on "Cambridge Assessment English" exam at the B1 level to include practice speaking & writing exams

**B2 First FCE:** Preparation for success on "Cambridge Assessment English First" at the B2 level exam to include practice speaking & writing tests

**B2 First FCE Intensive:** "Cambridge Assessment English: First" preparation course with additional afternoon classes

**C1 Advanced CAE:** Preparation for success on "Cambridge Assessment English: Advanced" exam at the C1 level to include practice speaking & writing tests

**C1 Advanced CAE Intensive:** "Cambridge Assessment English: Advanced" preparation course with additional afternoon classes





**TOEFL:** Preparation for success on TOEFL exam to include practice tests

**TOEIC:** Preparation for success on the TOEIC exam to include practice tests

**IELTS:** Preparation for success on IELTS exam to include practice tests



## ALL COURSES INCLUDE:

-  Orientation
-  Placement Test
-  Books & Materials
-  Free Internet Access

## TEST PREPARATION COURSE START DATES

Course	4 wks	6 wks	7 wks	9 wks	11 wks
PET	x	Apr 25	x	x	x
FCE	x	x	x	Jan 3, Jun 20	Mar 21, Sep 12
CAE	x	x	Jan 3	Jun 20	Mar 21, Sep 12
TOEFL	July 5, Oct 24	Jan 3, Mar 28, Sept 12	x	x	x
TOEIC	x	Mar 28, Jul 5	x	x	x
IELTS	x	Jan 3, July 18	x	x	Mar 21, Sept 12

### Exam Dates

PET: June 9 FCE: March 11, June 7, Aug 25, Nov 29 CAE: Feb 23, Jun 8, Aug 26, Nov 30

# 2022 Online Program

Hours per Wk	Course Times	Session Dates
10 hours per wk (2 hours/day Mon-Thurs + 2 hours self-study)	Private courses can be arranged to accommodate local time zones.	Upon request and for price details please contact <a href="mailto:info@cisledu">info@cisledu</a>

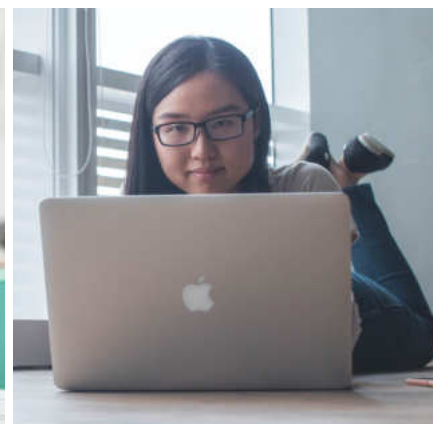
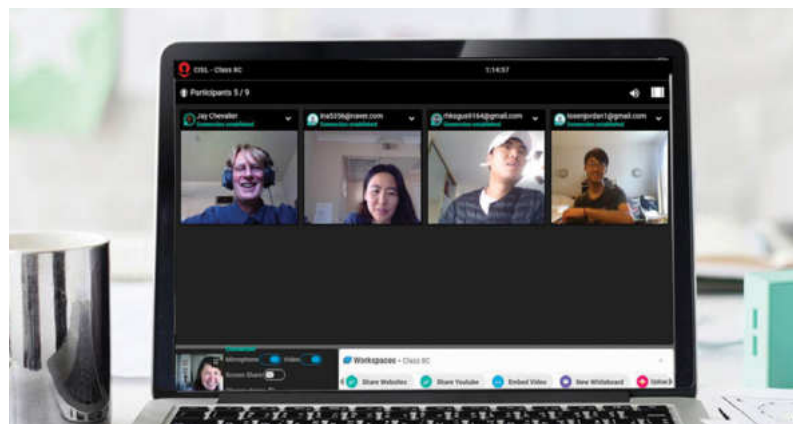
## COURSE DESCRIPTION

CISL's online platform is designed to give you the personal attention of a live class along with the flexibility and convenience of an online course. Our platform is specifically designed for the language learning industry.

In addition to the live online classes, students will also receive learning materials plus preparation and practice exercises which they can do on their mobile phones or computers. These learning activities help students practice what was learned in the live online class and prepare for the next class.

### Private courses (no minimum level required)

- English for Beginners (pre-B1)
- Business English
- Cambridge Assessment English: 4 week course
- TOEFL - 8 week course
- Premier Courses including Global Success, Executive English, English for Engineers, Aviation English
- Conversation Practice
- Presentations in English
- English for Academic Purposes (EAP)
- Aviation English
- Medical English
- Professional Travel and Tourism Customer Service



# Additional Information

## Official Exam Information\*

There are separate fees for taking an official exam, which are not included in the course price and subject to change by the awarding body. If students plan to take an exam after a course, an extra week of accommodation may be necessary.

The official **Cambridge Assessment English** exam fee for B2 First and C1 Advanced is \$350. The official B1 **PET** exam fee is \$200. The student must request exam registration prior to the course start date. CISL is an authorized Cambridge Assessment English center.

For **TOEFL, TOEIC and IELTS**, it is the student's responsibility to register for the exam with the name exactly as it appears in the passport.

The official **TOEFL exam** is \$195. Students must register and pay for this exam directly on the ETS website at [www.ets.org](http://www.ets.org)

The official **TOEIC exam** is \$26. Students must register and pay for this exam directly on the ETS website at [www.ets.org](http://www.ets.org)

The official **IELTS exam** is \$225. Students must register and pay for this exam directly on the IELTS website at [www.ielts.org](http://www.ielts.org)

## I-20/Student Visa

Please see page 7 for I-20/student visa requirements.

## Academic Year Program (AYP)

For the Fall 2022 semester enroll no later than April 16. For the Spring 2023 semester enroll no later than September 3. Approximate price is \$10,200. Prices are subject to change by the college. Books for university classes not included. This price is based on a 16-week CISL Intensive course (including 12 weeks of EAP) and one semester at a community college. Accommodation is not included in this price. A \$1,360 administration fee will be required.

## Pathway Program

The Pathway Program provides students admission to accredited, highly reputable American colleges or universities (often without a TOEFL or IELTS score). 12-week EAP class required.

The length of your program will depend on your level of English. See price list (page 3) for English course prices. College prices and dates are different for each college. A \$1,360 administration fee will be required.

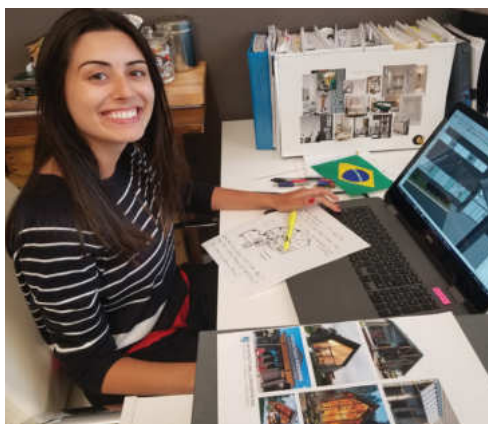
## CISL at a Glance

- **Capacity:** 144
- **Classrooms:** 18
- **Student Computers:** 10
- **Max Students in Class:** 8
- **Avg Students in Class:** 7
- **Max Students in Premier Class:** 4
- **Avg Students in Premier Class:** 3
- **Lesson Length:** 50 minutes
- **20 Lessons:** 16.67 hours
- **21.8 Lessons:** 18.2 hours
- **28 Lessons:** 23.3 hours
- **Minimum Course Length:** 2 weeks
- **Number of Standard Levels:** 10
- **Student Lounge**
- **Computer Lab**
- **Student Microwaves**

## School Closure Dates:

February 21, May 30, July 4, September 5, November 24-25

*\*Cost of the exam is subject to change by the exam syndicate.*



# 2022 San Diego Accommodations

Homestay	2 wks only	3 wks only	4+ wks (cost per week)	+ nights
<b>Homestay</b>				
Homestay - breakfast & dinner	\$755	\$1,000	\$340/wk	\$60
Homestay - breakfast only	\$650	\$900	\$305/wk	\$55
<b>Executive Homestay</b>				
Private room & bath / Breakfast & dinner	\$830	\$1,105	\$385/wk	\$70

Residences	2 wks only	3 wks only	4+ wks (cost per week)	+ nights**
<b>State Street</b>				
Private room/private bath - small single	\$1,100	\$1,400	\$370/wk	\$55
Private room/private bath - large single	\$1,210	\$1,500	\$395/wk	\$55
Double room/private bath - shared*	\$605*	\$895*	\$225/wk	\$35

\* Two people need to book together, price per person.

\*\* Short term stays include a city "transient occupancy tax" so are at a higher rate.

**Residence cancellation fee:** \$250 cancellation fee for canceling or changing reservation one month prior to the checking date.

## Other Charges

Accommodation Placement Fee (Non-refundable).....	\$125	Residences Cleaning Fee - required.....	\$50-\$100
Residences Security Deposit.....	\$500		

## ADDITIONAL INFORMATION

### Homestay

All prices are per person.

Typical travel time by public transportation to the school from host family is 30-40 minutes.

**Note:** For arrivals from July 1st through August 31st there will be an additional \$25 per week charge.

### State Street

All prices are per person.

Distance from the school is approximately 15 - 20 minutes on foot.

**Rooms Include:** Free WiFi, television, telephone, mini refrigerator, and microwave. Computer room, laundry room and shared kitchen available onsite.

No meals provided.

Non-Smoking Residence.

**Shared** = two students traveling together. Two twin beds.

**Note:** For arrivals from July 1st through August 31st there will be an additional \$25 per week charge.

**Additional Fees:** Refundable security deposit of \$500 due at check-in and non-refundable fee of \$50-\$100 depending on room type and length of stay.

# Adult Programs Terms and Conditions

## Course Confirmation and Payment

All tuition and fees must be paid in full before you start classes at CISL. Upon receipt of your application and payment, we will send you a letter confirming your acceptance. Payment may be sent by any of the following: international money order, electronic bank transfer (wire transfer), credit card (MasterCard or Visa only). We cannot process your application unless we receive your payment.

## Bank Transfers

CISL will provide the school's bank information for wire transfers upon request. Please include the student's name and student ID as part of the bank transfer information. The payment must include all sending and intermediary wire transfer charges. CISL will pay all receiving fees.

## I-20 Form/F-1 Student Visa

CISL is authorized to issue a Certificate of Eligibility (Form I-20) to qualifying full-time students. The I-20 form is used when applying for a student visa (F-1) and will only be issued for the number of weeks that your tuition is paid and that you are enrolled full-time (18 hours or more per week). You can extend your course at CISL, and a revised I-20 will be issued. The visa must be obtained at the U.S. Embassy in your home country before your departure. If you are denied a student visa, you will receive a refund of all prepaid tuition (minus the \$150 application fee or other non-refundable fees) when you (i) give the school a copy of the denial letter from the U.S. Embassy and, (ii) return the original I-20 form issued by the school.

If you require an I-20 form, you must provide CISL with documents showing that you have enough money to pay for all of your tuition and living expenses while you are studying at CISL as well as a copy of your passport and your home address. Please send these documents with your application. Financial means can be demonstrated with:

(1) Evidence of financial means (e.g. a copy of a recent bank statement) to pay your tuition and living expenses for the duration of your stay; or

(2) A letter of sponsorship from your parent or legal guardian accompanied by evidence of their financial means (e.g. a copy of a recent bank statement); or

(3) A letter of sponsorship from your company or organization together with evidence of its financial means.

Students taking any 20-lesson per week course and who are requesting an I-20 for a student visa will also need to take either an Afternoon Elective, private lessons, or attend a 1.5 hour Study Hall session each week in order to meet the 18-hour per week minimum requirement for the student visa. There is no extra charge for the 1.5 hour/week Study Hall. Students who choose the Study Hall option will have the designation "Plus" on their confirmation (e.g. "Standard Plus"). Failure to adhere to our minimum 85% attendance policy may result in termination of I-20 and dismissal from the school.

For more information about visas and travelling to the United States, please visit the following website: <http://studyinthestates.dhs.gov/students>

## Accommodations

A non-refundable accommodation placement fee of \$125 is required for all accommodations. A deposit of \$250 is required for all accommodations and will be applied to the total accommodation cost. If you cancel your accommodations after they have been confirmed, the deposit may not be refundable. Please read the Refund Policy carefully. If you are requesting homestay accommodations, please make flight reservations so that you arrive no later than 21:30.

## Course Extension

You can extend your course after you arrive. The additional course fee must be paid before the start of the extension. You can pay the school directly or through your official CISL representative in your country.

## Airport Transfers

Please send us your flight information as soon as possible. If you are requesting homestay accommodations, please make flight reservations so that you arrive before 21:30.

If you are staying with a host family, the arrival airport transfer is free if you arrive between 9:00 and 21:30 on the weekend.

Your host will meet you at the airport in the baggage claim area holding a sign with your name on it. Please be sure to carry your "Airport Transfer Confirmation" with you so that you have the emergency assistance number to call in case of a problem. If your flight is delayed to after 21:30, you will need to take a taxi or shuttle van to the host's home at your own expense. If your flight arrives Monday-Friday, please contact the school in advance to make arrangements for getting from the airport to your host family's home. For students not staying with a host family (or those arriving late or on weekdays) a private transfer service is available for \$80 (one-way).

## Medical Insurance

The school does not provide medical insurance. However, we strongly recommend that you purchase medical insurance for travelers to the United States or you ensure that your current policy is valid in the United States. You should do this before departing your country. Medical treatment in the United States is very expensive. You are responsible for any medical expenses incurred, so please be sure that you review the terms of your insurance policy, including covered services, deductibles, co-payments, length of coverage, etc., prior to arrival.

## Liability

CISL, its staff, and its representatives will not be liable for loss, damage or injury to persons or property however caused, except where liability is expressly imposed beyond exclusion by statute.

## Media Release

Students agree to allow photos and videos taken during CISL programs to be used for publicity purposes.

## Change of Enrollment

A \$250 course change fee may be charged.

## Premiere English (max 4 students per class)

In the event that we have only one student in a class we will offer the following:

20 lessons per week: Regular group classes in the morning plus one private Executive class per day in the afternoon Mon-Thurs.

28 lessons per week: Regular group classes in the morning plus two private Executive classes in the afternoon per day Mond-Thurs.

## 2022 Summer Programs *(For ages 13-17)*

Loyola University - Chicago					
Duration	Arrival Dates	Departure Dates	Price	Room and Board	Activities/Excursions
<b>Summer Loyola Chicago Campus</b>					
2 weeks	June 26 July 3/10/17	July 10/17/24/31	\$4,105	LUC Residence with 21 meals per week	4 half day excursions, 1 full day excursion and 1 afternoon campus activity
3 weeks	June 26 July 3/10	July 17/24/31	\$5,895		
4 weeks	June 26 July 3	July 24/31	\$7,820		

Loyola Marymount University - Los Angeles					
Duration	Arrival Dates	Departure Dates	Price	Room and Board	Activities/Excursions
Summer LMU Campus					
2 weeks	June 26 July 3/10	July 10/17/24	\$4,105	LMU Residence with 21 meals per week	4 half day excursions, 1 full day excursion and 1 afternoon campus activity
3 weeks	June 26/July 3	July 17/24	\$5,895		
4 weeks	June 26	July 25	\$7,820		
Summer LMU Campus + California Coastal Trip*					
2 wks+ Trip	June 26	July 15	\$5,970	LMU Residence with 21 meals per week <b>Trip:</b> double/triple room in hotel; no meals included	4 half day excursions, 1 full day excursion and 1 afternoon campus activity + Trip
3 wks+ Trip	June 26	July 24	\$7,955		

Georgetown University - Washington, D.C.					
Duration	Arrival Dates	Departure Dates	Price	Room and Board	Activities/Excursions
<b>Summer Georgetown Campus</b>					
2 weeks	June 26 July 3/10	July 10/17/24	\$4,105	Georgetown Residence with 21 meals per week	4 half day excursions, 1 full day excursion and 1 afternoon campus activity
3 weeks	June 27/ July 4	July 17/24	\$5,895		
4 weeks	June 26	July 24	\$7,820		

University of San Diego - San Diego					
Duration	Arrival Dates	Departure Dates	Price	Room and Board	Activities/Excursions
Summer USD Campus					
2 weeks	June 26 July 3/10/17/24	July 10/17/24/31 Aug 7	\$4,105	USD Residence with 21 meals per week	4 half day excursions, 1 full day excursion and 1 afternoon campus activity
3 weeks	June 26 July 3/10/17	July 17/24/31 Aug 7	\$5,895		
4 weeks	June 26 July 3/10	July 24/31 Aug 7	\$7,820		
Summer USD Campus + California Coastal Trip*					
2 wks+ Trip	June 26	July 15	\$5,970	<b>Campus:</b> USD Residence with 21 meals per week <b>Trip:</b> double/triple room in hotel; no meals included	4 half day excursions, 1 full day excursion and 1 afternoon campus activity + Trip
3 wks+ Trip	June 26	July 24	\$7,955		
Summer Homestay at USD					
2 weeks	June 26 July 3/10/17/24	July 10/17/24/31 Aug 7	\$3,360	Double Room with 14 meals per week with host family. Lunch will be provided Monday-Friday at USD, and lunch and dinner will be provided on Saturday excursions.	4 half day excursions, 1 full day excursion and 1 afternoon campus activity
3 weeks	June 26 July 3/10/17	July 17/24/31 Aug 7	\$4,750		
4 weeks	June 26 July 3/10	July 24/31 Aug 7	\$6,120		
July Homestay at USD + California Coastal Trip*					
2 wks+ Trip	June 26	July 15	\$5,420	<b>Homestay:</b> See room and board for homestay above <b>Trip:</b> double/triple room in hotel; no meals included	4 half day excursions, 1 full day excursion and 1 afternoon campus activity + Trip
3 wks+ Trip	June 26	July 24	\$6,810		







**Yale University - New Haven**

Duration	Arrival Dates	Departure Dates	Price	Room and Board	Activities/Excursions
<i>Summer Yale Campus</i>					
2 weeks	June 26 July 3/10/17	July 10/17/24/31	\$4,645	Yale Residence with 21 meals per week	4 half day excursions, 1 full day excursion and 1 afternoon campus activity
3 weeks	June 26 July 3/10	July 17/24/31	\$6,810		
4 weeks	June 26 July 3	July 24/31	\$8,970		

**UC Berkeley - San Francisco**

Duration	Arrival Dates	Departure Dates	Price	Room and Board	Activities/Excursions
<i>Summer UC Berkeley Campus</i>					
2 weeks	July 3/10/17	July 17/24/31	\$5,070	UC Berkeley Residence with 21 meals per week	4 half day excursions, 1 full day excursion and 1 afternoon campus activity
3 weeks	July 3/10	July 24/31	\$7,515		
4 weeks	July 3	July 31	\$9,985		

**JUNIOR COURSES INCLUDE:**

-  20 lessons per week + 2 Cultural Workshops
-  24 hour supervision
-  Full Activities Program
-  WiFi
-  Full Room and Board
-  Course Certificate and Final Report



## 2022 January Homestay Program *(For ages 13-17)*



Duration	Arrival Dates	Departure Dates	Price	Room and Board	Activities/Excursions
2 weeks	Jan 4/11/18	Jan 18/25	\$2,885	Homestay: Double Room with 14 meals per week	5 half day and 1 full day excursion
3 weeks	Jan 1/11	Jan 25	\$4,115		

### ADDITIONAL INFORMATION

#### All Campus Summer programs:

For airport transfer fees please contact [juniorprograms@cis.edu](mailto:juniorprograms@cis.edu)

#### Loyola Marymount University:

\* For students doing 2 weeks + Trip, final date of the program is July 16. Students must plan on departing this day, unless extending their program for additional weeks.

#### Georgetown University:

An overnight sightseeing trip to NYC is included for those students attending the program dates during the third week of July 2021. All meals and accommodation are included. There are additional fees for non-residential students. Contact [juniorprograms@cis.edu](mailto:juniorprograms@cis.edu) for more information.



## 2022 Online Program *(For ages 13-17)*

Hours per Wk	Course Times	Price	Session Dates
10 hours per wk (2 hours/day + self-study)	Courses are offered Monday - Thursday Customizable programs available, including Cambridge prep courses. Please contact <a href="mailto:juniorprograms@cis.edu">juniorprograms@cis.edu</a>	\$125 week	All year round

#### University of San Diego:

\* For students doing 2 weeks + Trip, final date of the program is July 15. Students must plan on departing this day, unless extending their program for additional weeks.

There is a 3-day weekend trip (July 29 - 31 2022) to Los Angeles for Summer USD Program students attending the program during the dates of July 25 - August 7, 2022. Students must plan to depart San Diego July 24 or August 7, 2022. If students wish to depart on July 31, 2022 it must be from LAX, and departure should be by 19:00. This 3-day trip is included in the program fees for the campus students, however there are **additional fees for Summer USD Homestay students**. Contact [juniorprograms@cis.edu](mailto:juniorprograms@cis.edu) for more information.

Local bus/trolley pass is included with the USD Homestay programs.

For LAX Transportation fee contact [juniorprograms@cis.edu](mailto:juniorprograms@cis.edu).

#### San Diego January Homestay:

Local bus/trolley pass is included.

For LAX Transportation fee contact [juniorprograms@cis.edu](mailto:juniorprograms@cis.edu).

#### Custom San Diego Homestay Programs:

Custom Homestay Programs available at other times during the year. Please contact [juniorprograms@cis.edu](mailto:juniorprograms@cis.edu)



# Junior Programs Terms and Conditions

## Age

All programs are for students between the ages of 13 and 17.

## Program Application

A parent or guardian must complete the 2022 CISL Junior Program application (with their signature) in order to enroll a student into one of the CISL Junior Programs.

## Airport Transfers:

**Campus Programs-** Airport transfers are NOT included, but are an option for an additional fee. Please contact [juniorprograms@cisl.edu](mailto:juniorprograms@cisl.edu).

**January Junior Homestay Program (San Diego), July Homestay at USD Program (San Diego)-**Local two-way airport transfer from San Diego (SAN) is included for students arriving on a Saturday/Sunday between 9:00 and 21:00. Transfers can be arranged for students arriving at other hours/days for an additional charge. Please contact [juniorprograms@cisl.edu](mailto:juniorprograms@cisl.edu).

**Unaccompanied Minor Service-** Additional applicable fees will be applied for any student requesting the Unaccompanied Minor Service (UNMS) from CISL. **These fees are in addition to the airline UNMS fees.** Please contact Junior Program Director for information and pricing at [juniorprograms@cisl.edu](mailto:juniorprograms@cisl.edu).

## Group Leaders

Accommodations, transportation, and activities/excursions for one group leader are included for each group of 10 students. For groups of 6-10 students, the cost of accommodations and activities will be prorated to the number of students in the group. Group leaders will be required to sign agreement prior to arrival.

## Insurance

The junior programs do not provide medical insurance. Each student and group leader must have medical insurance and proof of this insurance is required prior to arrival. Please ensure that your policy is valid in the United States. Medical treatment in the United States is very expensive. You are responsible for any medical expenses incurred, so please be sure that you review the terms of your insurance policy, including covered services, deductibles, co-payments, length of coverage, etc., prior to arrival. Parents must also sign a waiver allowing CISL staff to act as guardians on their behalf should it become necessary for a medical issue.

## Refundable Security Deposit /Campus Programs:

A \$150 refundable security deposit is required upon arrival to the campus; deposit is returned after check-out is completed by CISL and University Staff to ensure nothing is lost or broken. Security deposit may also be withheld for rule infractions.

## Refund and Cancellation Policy

Please refer to the junior application for the refund and cancellation policy. All prices and conditions are subject to change.

## Yale University Junior Program (only)

Pursuant to the Connecticut Youth Camp Licensing Board, all students applying to the Yale Junior Program are required to send us a copy of their annual health appraisal/physical exam and list of immunizations. This must be received by CISL prior to the start of the program, in order for the student to participate. Failure to submit the health exam may prohibit student's attendance in our Yale program.

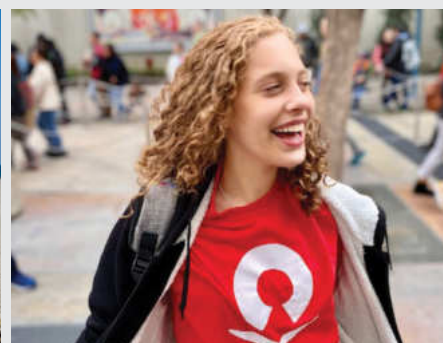
## Media Release

Students agree to allow photos and videos taken during the program to be used for publicity purposes.

## Liability

CISL, its staff, and its representatives will not be liable for loss, damage or injury to persons or property however caused, except where liability is expressly imposed beyond exclusion by statute.





#### San Diego Adult Programs:

636 Broadway, Suite 210  
San Diego, California 92101 USA  
Ph. +1 619 239 3363  
Fax. +1 619 239 3778  
E-mail: [info@cisl.edu](mailto:info@cisl.edu)  
Skype: [cisl.san.diego](https://www.skype.com/name/cisl.san.diego)

#### San Diego Junior Programs:

636 Broadway, Suite 210  
San Diego, California 92101 USA  
Ph. +1 619 501 0205  
Fax. +1 619 239 3778  
E-mail: [juniors@cisl.edu](mailto:juniors@cisl.edu)  
Skype: [cisl.juniors](https://www.skype.com/name/cisl.juniors)

For more information visit [cisl.edu](http://cisl.edu)

*The mission of Converse International School of Languages (CISL) is to help our clients learn to communicate effectively and with confidence in English.*